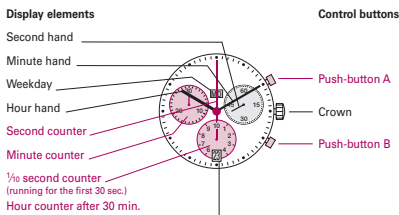


You have decided to buy a watch, which was assembled by a watchmaker using a Ronda movement. Please note that no watches are produced or distributed under the Ronda brand.

In case of repairs, guarantee claims and questions concerning the functioning of a watch, purchasers and consumers should contact their retailer or the watch manufacturer, for which the relevant information can be found in the sales or guarantee documentation provided with the watch.

Description of the display and control buttons



Chronograph: Basic function

(Start / Stop / Reset)

Example:

- Start:** Press push-button A.
- Stop:** to stop the timing, press push-button A once more and read the chronograph counters:
4 min / 38 sek / 1/2 sec
- Zero positioning:** Press push-button B. (The chronograph hands will be reset to their zero positions.)

05

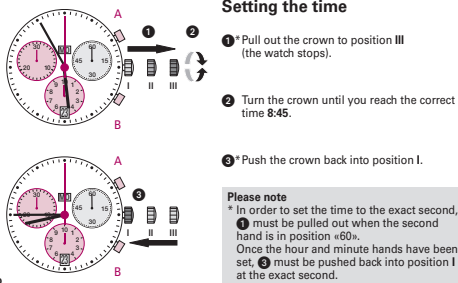
Chronograph: Accumulated timing

Example:

- Start:** (start timing)
 - Stop:** (e.g. 15 min 5 sec following 1)
 - Restart:** (timing is resumed)
 - Stop:** (e.g. 5 min 12 sec following 3) = 20 min 17 sec (The accumulated measured time is shown)
 - Reset:** The chronograph hands are returned to their zero positions.
- Please note**
* Following 4, the accumulation of the timing can be continued by pressing push-button A (Restart / Stop, Restart / Stop, ...).

06

Setting the time



02

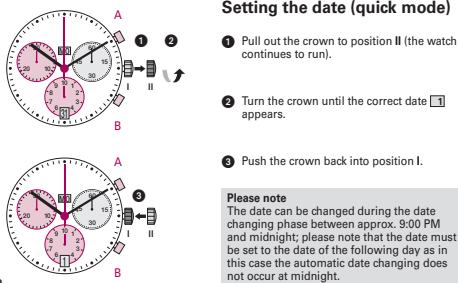
Chronograph: Intermediate or interval timing

Example:

- Start:** (start timing)
 - Display interval:** e.g. 20 minutes 17 seconds (timing continues in the background)
 - Making up the measured time:** (The chronograph hands are quickly advanced to the ongoing measured time.)
 - Stop:** (Final time is displayed)
 - Reset:** The chronograph hands are returned to their zero position
- Please note**
* Following 2, further intervals or intermediates can be displayed by pressing push-button B (display interval / make up measured time, ...).

07

Setting the date (quick mode)

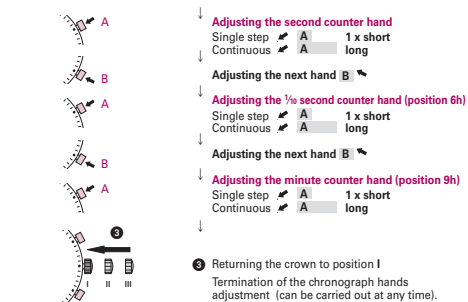


03

Adjusting the chronograph hands to zero position

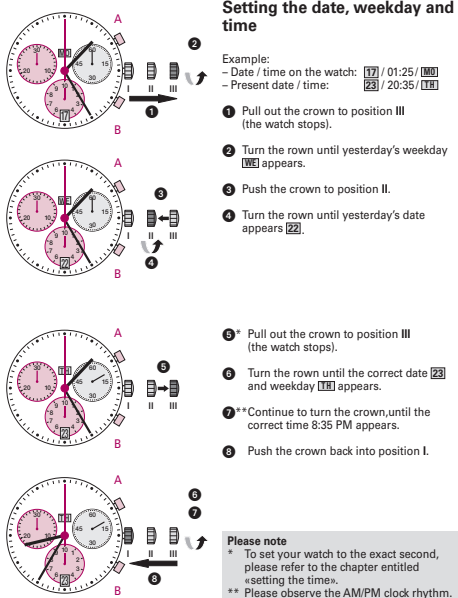
Example:

- One or several chronograph hands are not in their correct zero positions and have to be adjusted (e.g. following a battery change).
- Pull out the crown to position III (all chronograph hands are in their correct or incorrect zero position).
 - Keep push-buttons A and B depressed simultaneously for at least 2 seconds (the second counter hand rotates by 360° → corrective mode is activated).



08

Setting the date, weekday and time



04